

YEFB Hydro Blower

2 & 4 pipe system

A complete range from 2.8 kW up to 31.5 kW



CSR00 (Wall mounted)
Fan speed selector



CMR00 (Wall mounted)
Thermostat with manual fan speed and S/W change over



CER00 (Wall mounted)
Thermostat with manual fan speed and automatic change over

CER20 (Wall mounted)
Thermostat with auto. fan speed and automatic change over

CER30 (Wall mounted)
Thermostat with auto. fan speed and automatic change over for modulating valve



TUC03 Terminal unit controller
BacNET and N2 Metasys network compatible

YEFB Blower units are available in 6 sizes for horizontal concealed installations: thanks to their high ESP fans that can handle up to 250Pa, they are the ideal solution for air conditioning large spaces.



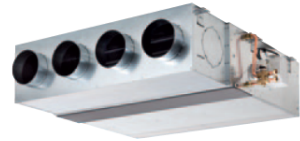
Selection software

Features

- 6 unit sizes for horizontal mounting
- Handles high external static pressure up to 250Pa
- Choice of 2 or 4 pipe systems
- Twin centrifugal fans
- Horizontal air return
- Air distribution plenum
- Electric heater option
- Optional paint finish
- F5 grade filter option
- 5 Row cooling coil option on sizes 060, 070

YEFB Hydro Blower

2.8 to 31.5 kW



Unit performance at 50 Pa external static pressure, with 4 row cooling coil

Model YEFB			020-4	030-4	040-4	050-4	060-4	070-4
Total cooling capacity [kW]	(1)	max	7.14	10.12	12.84	15.02	19.92	24.31
		med	5.40	8.29	10.82	13.04	16.31	19.72
		min	3.33	7.00	8.98	11.66	13.53	18.11
Sensible cooling capacity [kW]	(1)	max	5.90	8.62	11.31	13.51	17.17	22.14
		med	4.23	6.53	8.94	11.42	13.67	19.05
		min	2.42	5.27	7.03	7.90	11.08	17.11
Water flow in cooling [l/h]	(1)	max	1 225	1 736	2 204	2 577	3 418	4 171
		med	927	1 422	1 856	2 238	2 799	3 384
		min	571	1 201	1 541	2 000	2 321	3 107
Pressure drop in cooling [kPa]	(1)	max	27.9	35.0	38.3	52.4	19.1	27.6
		med	17.7	24.0	27.9	39.9	13.2	23.4
		min	8.1	17.6	19.6	32.1	9.4	20.1
Heating capacity 2 pipes [kW]	(2)	max	8.79	14.24	17.90	20.84	28.24	36.11
		med	6.95	11.11	15.10	17.97	22.86	33.19
		min	4.23	9.13	11.68	15.76	18.79	30.39
Water flow in heating 2 pipes [l/h]	(2)	max	Water flow values as Cooling, accordingly to the EUROVENT standards and UNI ENV 1397					
		med						
		min						
Pressure drop in heating 2 pipes [kPa]	(2)	max	25.2	31.1	34.7	47.6	17.0	24.5
		med	15.5	21.5	25.2	36.3	11.6	20.8
		min	7.0	15.6	17.9	29.7	8.3	17.9
Heating capacity 2 pipes [kW]	(3)	max	14.82	24.42	30.60	35.58	48.45	62.46
		med	11.76	18.93	25.70	30.63	39.13	57.95
		min	7.12	15.47	19.74	26.81	32.07	52.99
Water flow in heating 2 pipes [l/h]	(3)	max	1 301	2 145	2 688	3 126	4 256	5 487
		med	1 033	1 662	2 258	2 691	3 437	5 092
		min	626	1 359	1 734	2 355	2 817	4 656
Pressure drop in heating 2 pipes [kPa]	(3)	max	27.2	44.4	48.1	65.5	24.5	39.0
		med	18.2	27.7	34.7	49.1	16.3	42.4
		min	7.9	18.8	21.4	38.6	11.4	36.1
Air flow [m ³ /h]		max	1 326	2 160	2 760	3 513	4 118	5 541
		med	844	1 450	2 076	2 746	3 176	4 928
		min	505	1 115	1 545	2 320	2 548	4 340
Sound power level [dB(A)]		max	63.8	65.4	70.1	72.5	76.6	79.7
		med	53.5	59.7	63.0	67.1	69.3	77.0
		min	43.7	54.9	56.4	63.2	64.2	74.4
Sound pressure level [dB(A)]	(4)	max	53.2	54.8	59.5	61.9	66.0	69.1
		med	42.9	49.1	52.4	56.4	58.8	66.4
		min	33.1	44.3	45.8	52.6	53.6	63.8
Power supply [V-ph-Hz]		230 / 1 / 50						
Power input [W]	max	185	392	508	703	1 056	1 794	
Absorbed current [A]	max	0.81	1.90	2.24	3.08	4.85	8.05	
Dimensions	Height	mm	407.6	407.6	407.6	407.6	517.6	517.6
	Width	mm	902	902	902	902	902	1 160
	Depth	mm	989.6	989.6	1 239.6	1 239.6	1 634.6	1 634.6

(1) Room temperature 27°C d.b., 19°C w.b. - Water temperature 7/12 °C

(2) Room temperature 20°C - Water inlet temperature: 50°C

(3) Room temperature 20°C - Water inlet temperature: 70/60°C

(4) Sound pressure level in a 100 m³ room, at 1 m distance and reverberating time of 0.3 s.

4 pipe system not available with 4R coil